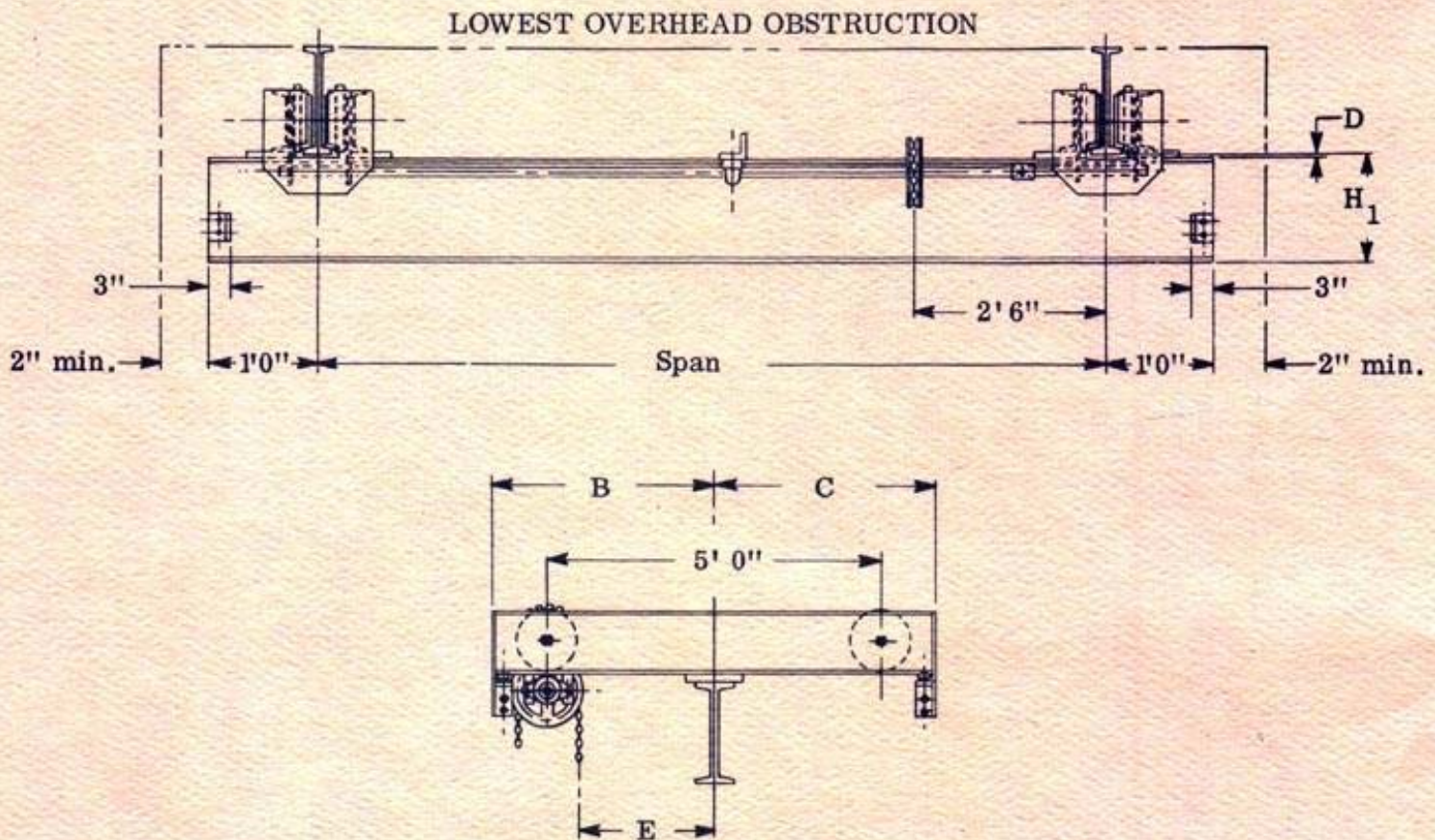


OUTLINE DIMENSIONS MODEL USG CRANES



STANDARD CRANE FEATURES:

- DESIGN:**
All "Reliable" Model USG Cranes are designed and manufactured to meet or exceed the requirements of C.M.A.A. Specification No. 74.
- BRIDGE GIRDERS:**
Constructed from "S" series rolled steel sections precision shop straightened to insure smooth hoist-trolley tracking.
- LINE SHAFT:**
Precision sized cold rolled steel shafting supported from self-aligning lubricated and sealed ball bearing pillow blocks.
- HAND WHEEL DRIVE:**
Large diameter pocket wheel for ease of operation complete with chain guard and sufficient alloy hand chain for a standard 8'-0" operating hand chain drop.
- END TRUCK FRAMES:**
Fabricated from steel channel shapes with heavy axle reinforcement bosses, precision drilled bridge girder connection pads and protective front plates with rail safety lugs all jig assembled to insure accurate wheel alignment for true running operation. Split truck design allows quick easy erection on either open end or closed end runway systems.
- SIDE ROLLER GUIDANCE:**
Heavy duty cam follower bearings provide smooth non-skewing crane operation plus reduced crane wheel and runway rail wear. Side roller setting requires 1/4" plus or minus runway rail span alignment to insure smooth crane operation.
- TRU-TRED WHEELS:**
Precision machined from alloy steel with flangeless design to meet the most demanding crane service requirements.
- WHEEL BEARINGS:**
Heavy duty long life rated pre-lubricated and sealed Timken tapered roller wheel bearings designed to take the unavoidable shocks of crane service.
- WHEEL GEARING:**
Alloy carbon steel precision machine cut, sized and proportioned with large pitch diameter pinion gears having generous face width for long life and quiet operation. Pinion gears are supported between self-aligning lubricated and sealed ball bearing pillow blocks--no overhung gearing.

RELIABLE is a TRADEMARK with character definition and it is your assurance of receiving **RELIABILITY** in top quality construction and the best value in a crane.